

# Welcome to One Click Pony!

If you have been enjoying the computer-based handicapping from e-ponies.com for years, now you can have the same powerful application just a click away.

## Getting Started

### 1. Opening a Bris Account

- One Click Pony requires data files to analyze. The data provider chosen to partner with One Click Pony is BRIS.
- You may buy the BRIS data files online but first you must register with Brisnet.com. To go to Brisnet go to the following link: <http://www.brisnet.com/cgi-bin/gateway.cgi?from=1025&to=>
- Follow the instructions for registering.



### 2. Downloading data files

- Once you are registered with Brisnet, you may download data files at the following location: [http://www.brisnet.com/cgi-bin/trk\\_report.cgi?drs](http://www.brisnet.com/cgi-bin/trk_report.cgi?drs)



Figure 2 Retrieving Data Files

- The data files you need are the DRF data files, single file format.  
**Please note: These are data files, not viewable past performances files. You need the single file format, just like in the example above.**
- If you would like to practice on a data file, you may do so by clicking this link or by typing this URL in your browser: [www.e-ponies.com/aqu1026.drf](http://www.e-ponies.com/aqu1026.drf)
- When you see the page like the one in the image above, scroll down until you find the file you want for the track and date you wish to handicap, click on the link. If the date ends with the letter "p" it means that the morning line odds and saddle cloth numbers are available and included in the data file.  
**Please note: if you download the data file before the saddle cloth numbers are available (indicated by a "p" as described above), One Click Pony will not work and you will get an error message.**

- e. Upon registering with Brisnet, you were given a username and password via email. You will need them to download files. See image below:

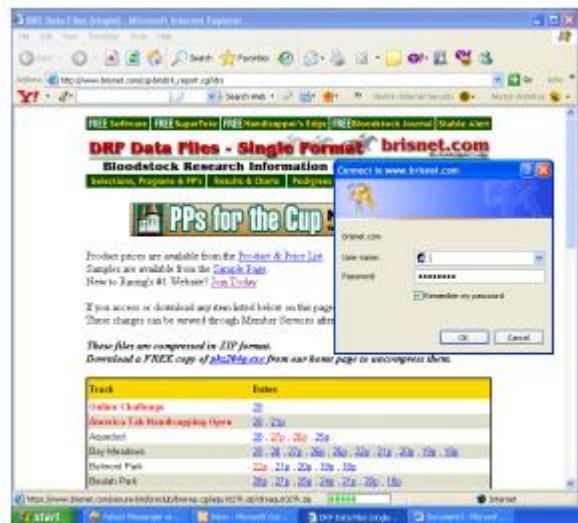


Figure 3 BRIS Requires your password

- f. The data files available from Bris are zipped (compressed files). You must unzip (extract) them before they are usable by One Click Pony. When you click the link, you will be presented with a prompt like the one in the image below:

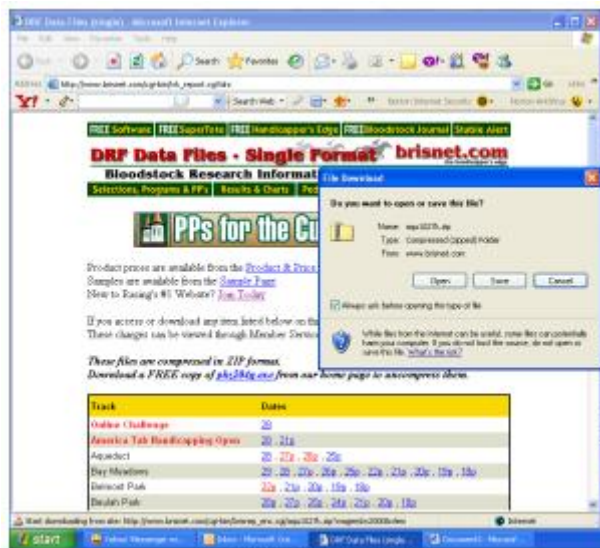


Figure 4 Save data file

- g. Click "Open" to open the zip file.  
**CAUTION: The name of the file you have just unzipped should end in .drf, like in the example below. If it ends in .pdf, you are downloading the wrong file type.**
- h. Click on the Edit menu and then click on "copy"





Figure 8 Logging in to One Click Pony

Type in your username and password. If you do not have a username and password send an email to [help@oneclickpony.com](mailto:help@oneclickpony.com).

Once you are logged in, you will be presented with the One Click Pony landing page, as below:

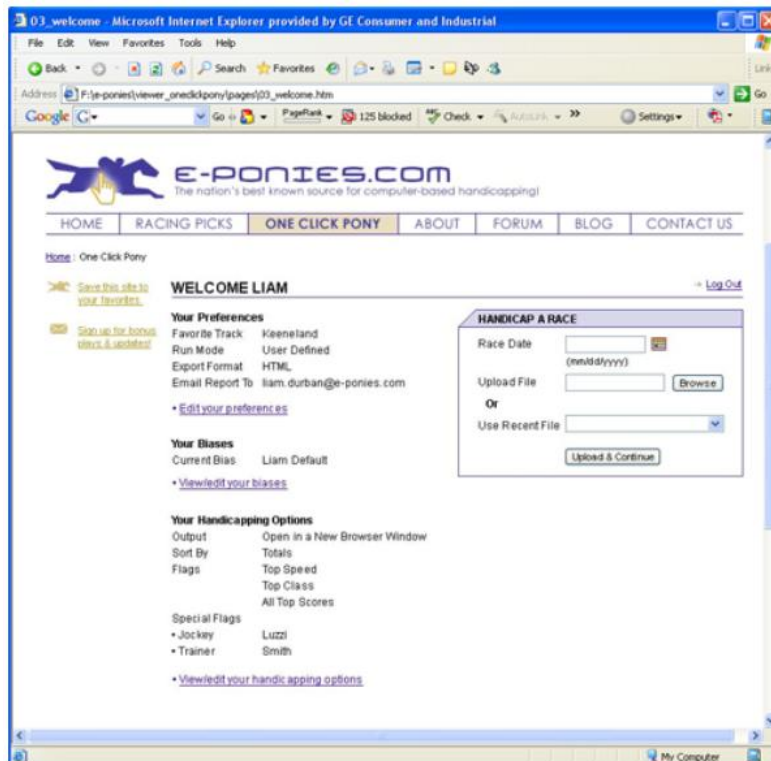


Figure 9 One Click Pony Landing Page

From this page, you can do several things. You can change your preferences, adjust your biases or change your options.

#### 4. The Preferences Screen.

Clicking on the preferences button takes you to the preferences page as shown below:

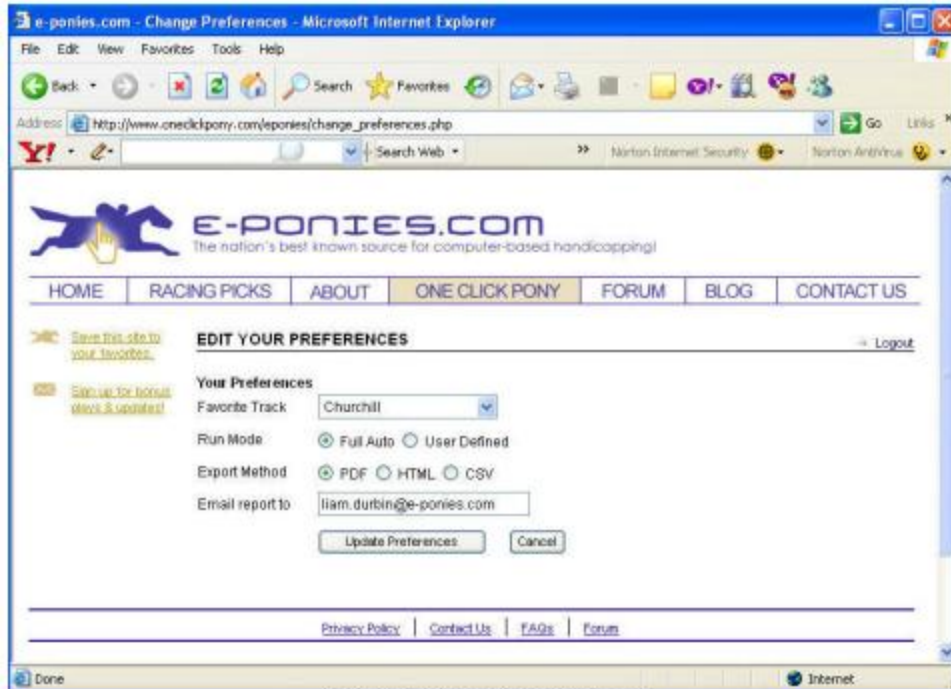


Figure 10 Changing preferences

Preferences include the following: choosing your favorite track, choosing the Run Mode, choosing the output format, and choosing the destination email address.

- a. Choosing your favorite track. Click the drop down box and choose from available tracks. It is not necessary to choose your favorite track in order to handicap it. This preference is primarily for future functionality.

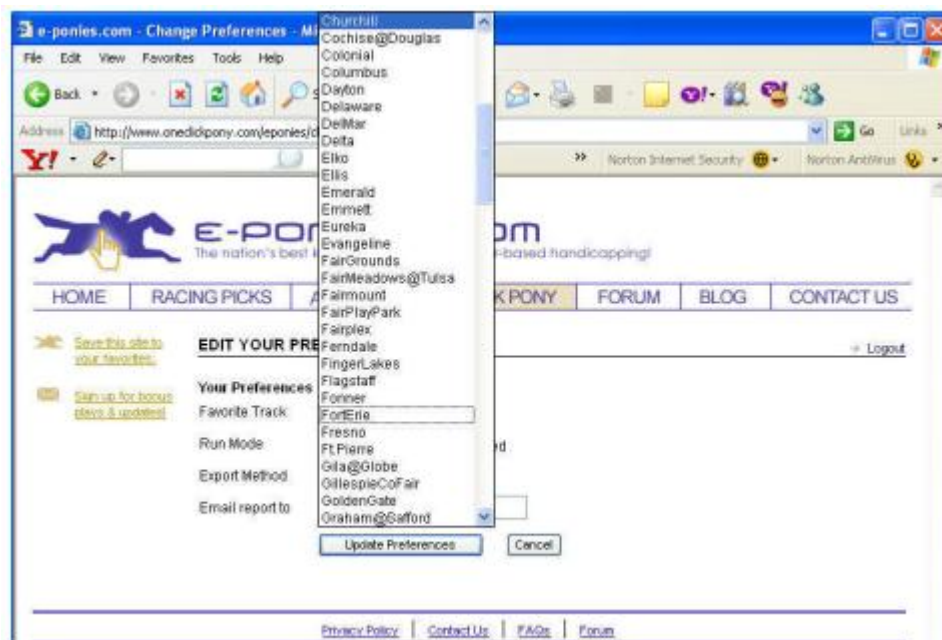


Figure 11 Choosing favorite track

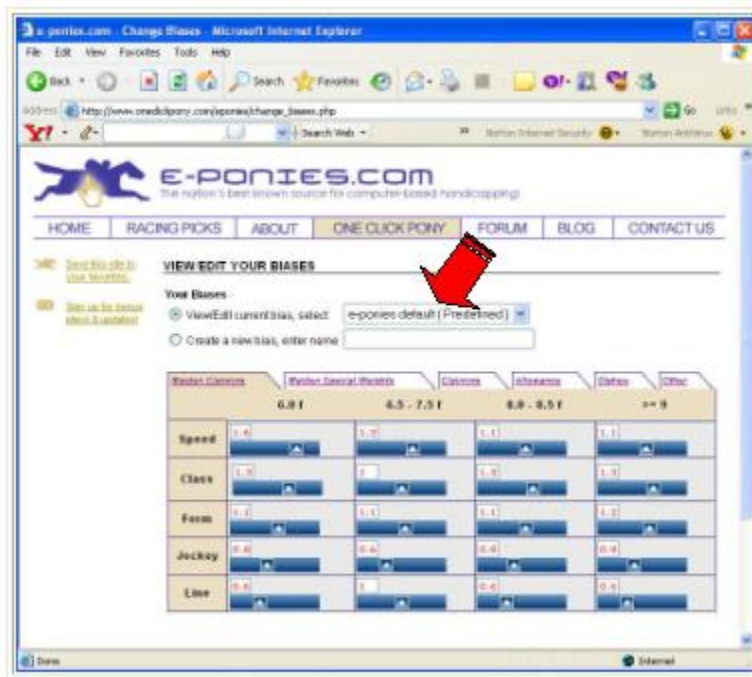
- b. Choosing the run mode. Users can choose between Full Auto and Manual Mode. In Full Auto, One Click Pony will apply biases to each race without any additional input from users. In Manual Mode, the user can adjust the biases for each race individually, to his personal tastes.

- c. Choosing the output mode. Users can choose between HTML, PDF and Text outputs.
- d. Choosing the destination email. Users can have the output sent automatically to their inbox. Enter the email address here to which you want One Click Pony to send the files.

## 5. The Biases screen

One Click Pony has three default biases available: e-ponies.com default, speed bias, and class bias. To choose a bias, simply click the drop down menu and then choose the one you like

- a. Use the e-ponies.com default biases if you would like to see the output like you are used to getting from e-ponies.com via the web. These bias settings are fairly moderate in nature, but do have a slight bias towards class.



**Figure 12 Choosing default bias**

- b. Use the Speed Default biases if you would like to see horses with early speed ability to get additional points. This setting should bring horses with early speed to the top of the rankings.
- c. Use the Class Default biases if you want to give horses with more back class an edge in the rankings.
- d. Creating your own custom bias settings. One Click Pony will also allow users to create and save their own custom biases. The simplest method for creating a custom bias is to start with an existing bias and then modify it to your tastes. Modifying the biases is a simple process. Just click on the slider bars and drag them to the setting you want. Please note that there are several tabs for the different types of races. Once you have modified the biases to the way you want them, simply type a name in the text box (see image below) and then click "Save."

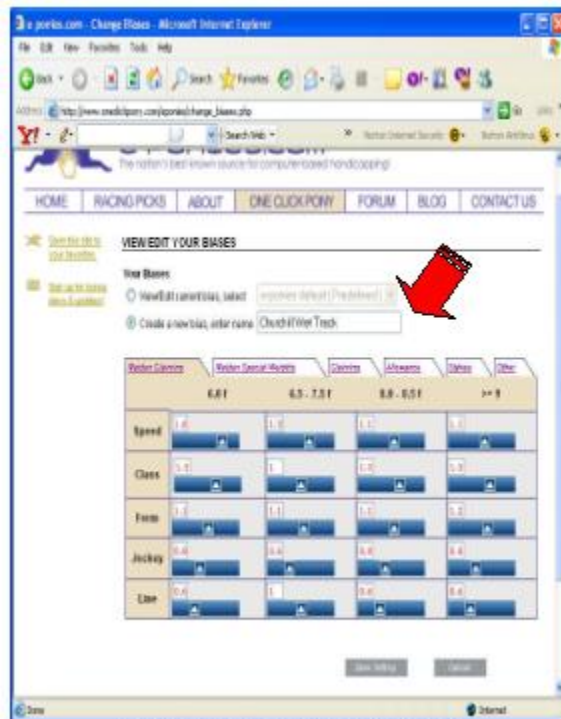


Figure 13 Saving a custom bias

## 6. Handicapping a race

Once you have set your preferences and options, click on the link that says “Handicap Race”

- a. Uploading a file - If you know the file name and location, you may type it directly into the text box and then click on “Upload file.”

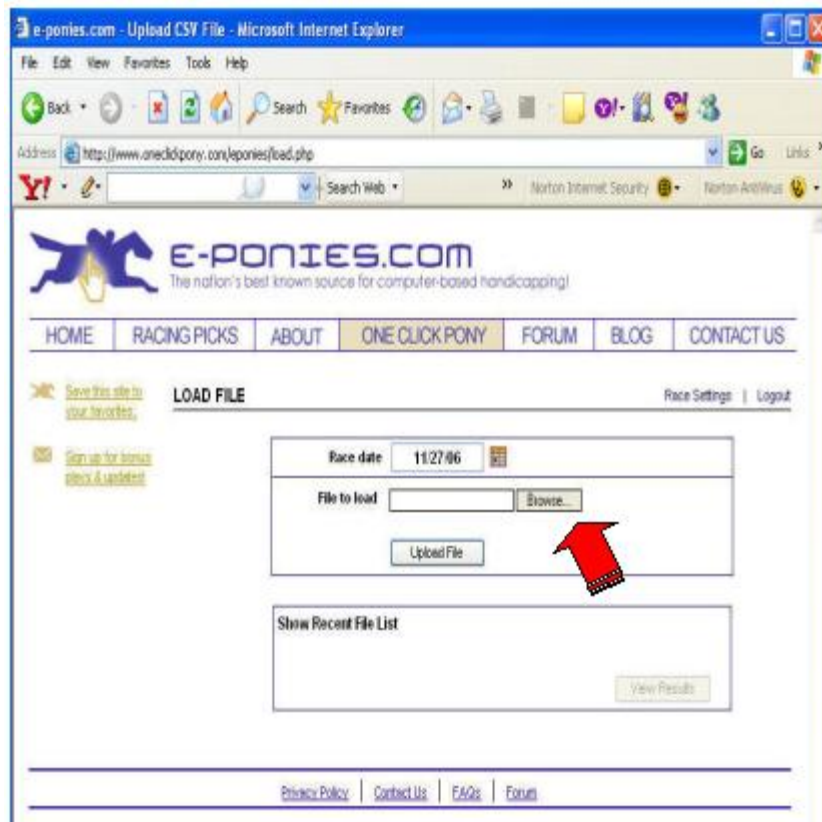


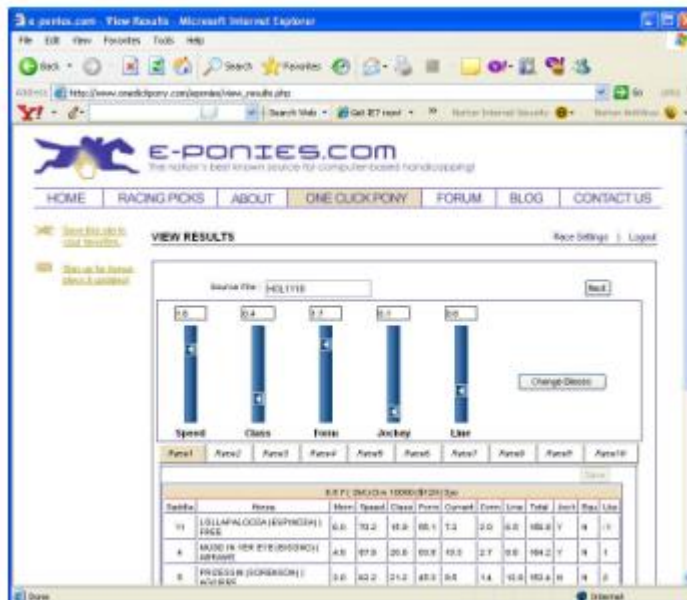
Figure 14 Loading a file - browse method

- b. More than likely you will not know the exact location of the file, so click the “Browse” button to locate the file.
- c. Whether you type it in directly or browse for it, once the file location and name appear in the text box, click the button that says “Upload file.”
- d. The progress bar will indicate that the file is being analyzed. Once it is complete, users will be notified that the process is complete. Click the “continue” button to proceed.



**Figure 15 Handicapping a race - File is uploading**

- e. Proceeding in “User Defined” mode. If you have chosen to work in User Defined mode in the preferences menu (see above) you will be directed to a screen that looks like the one below. From this screen you can choose each race separately and adjust the biases for each race to your preference. When the race loads, it will apply the bias which you have selected. But from there you may make changes by directly manipulating the slider bars.



**Figure 16 User Defined mode - Race 1**

After you adjust the biases with the slider bars, click the “Change Biases” buttons to apply the changes and see the new scores and new ranked order. When you are through tweaking that race, click the Save button at the bottom of the screen. Then choose a new race from the race tabs in the middle of the page.

After you have finished tweaking the races to your desires, click the “Next” button. This will save the races to an output file. Clicking “Next” will take the user back to the Options menu where the output can be customized (choosing sort order, adding flags, etc)

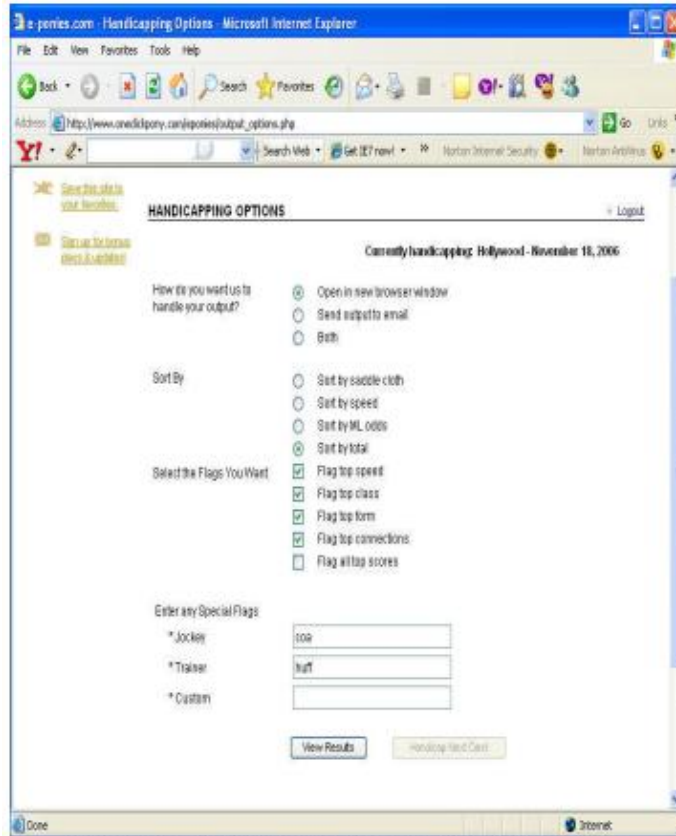


Figure 17 User defined mode - choosing output options

To proceed, click the “View Results” button. This will send the output to your inbox (over the internet, this is not instantaneous). Or OCP will do both, sending an email and displaying the results on screen, depending on your choice in the “Options” tab.

Race	Class	Speed	Speed	Class	Form	Connections	Total	Other	Flag	Cost
1	1	10.0	10.0	10.0	10.0	10.0	10.0	10.0	10.0	10.0
2	2	10.0	10.0	10.0	10.0	10.0	10.0	10.0	10.0	10.0
3	3	10.0	10.0	10.0	10.0	10.0	10.0	10.0	10.0	10.0
4	4	10.0	10.0	10.0	10.0	10.0	10.0	10.0	10.0	10.0
5	5	10.0	10.0	10.0	10.0	10.0	10.0	10.0	10.0	10.0
6	6	10.0	10.0	10.0	10.0	10.0	10.0	10.0	10.0	10.0
7	7	10.0	10.0	10.0	10.0	10.0	10.0	10.0	10.0	10.0
8	8	10.0	10.0	10.0	10.0	10.0	10.0	10.0	10.0	10.0
9	9	10.0	10.0	10.0	10.0	10.0	10.0	10.0	10.0	10.0
10	10	10.0	10.0	10.0	10.0	10.0	10.0	10.0	10.0	10.0

Figure 18 Example output

Operating in User Defined mode may be best for handicapping a track known to have very special characteristics such as a heavy speed bias. User Defined mode allows the user to see the results race by race before producing the output file. It is slower but allows for a lot of customization.

f. Operating in "Full Auto" mode.

If you have chosen to work in Full Auto, One Click Pony applies the biases (per your bias selection) to each race automatically by detecting the class and distance of the race and then referring to the bias tables.

Once the analysis is complete, you may click "Continue" to have the output displayed for you on screen, sent to your inbox, or both.

Full Auto is the recommended mode for most users. Once you get comfortable with a bias setting, either one of the defaults or one that you created, you will find it easiest to just go to Full Auto and leave all the work to the application.

## **7. Receiving the email output.**

Keep in mind that the email generated by One Click Pony is subject to the same delays, filtering and rules as all other email messages. There is no guarantee it will arrive in a timely fashion, and it may be stuck in a folder or deleted as spam when it arrives. Make sure email from @oneclickpony.com is on your list of approved email senders. You can rest assured that the email will be sent. Retrieving it is not something One Click Pony can help you with. If receiving the email becomes a problem, you have the option of choosing the on screen output and then printing the file from there.